

BETGEM CALCULATOR

Copyright: WWW.BETGEM.COM

Contact: INFO@BETGEM.COM

The Betgem calculator is a 33 spreadsheet MS Excel file that is designed as a one stop solution for different betting activities. It will complement a wide variety of betting systems and staking plans, providing at the same time a simple and pleasant visual interface.

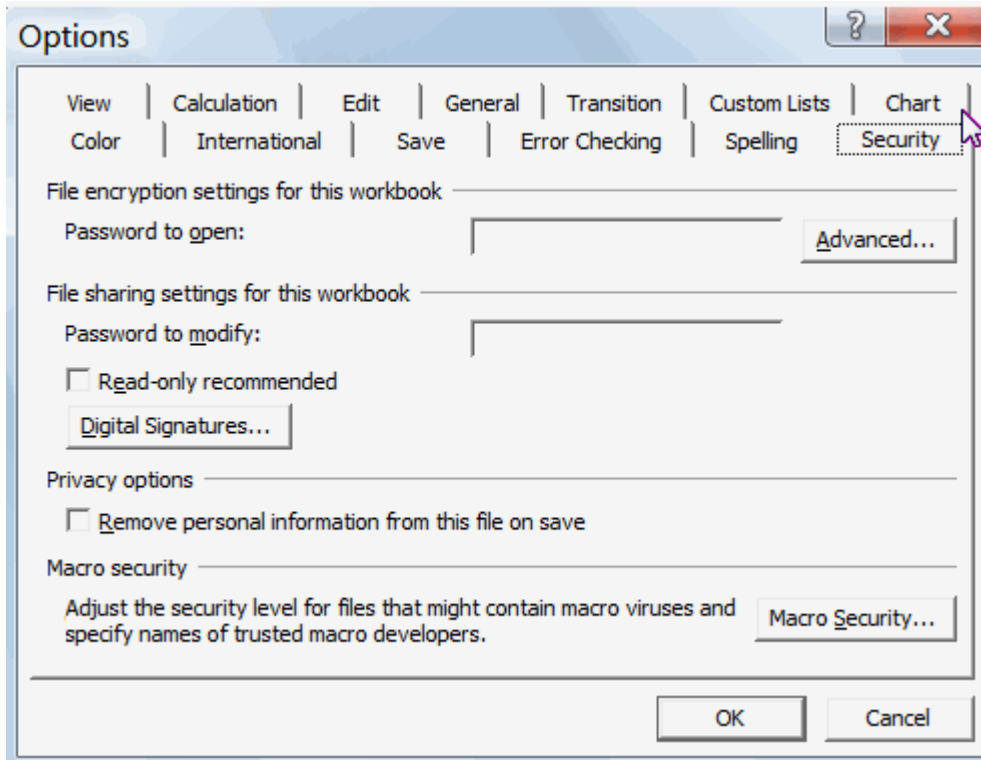
The purpose of this manual is to facilitate the end user in using the calculator in the most efficient way. Relevant screenshots are provided with short and concise instructions.

First, you need to change some options in Excel so that the spreadsheet is functioning as intended. The Betgem calculator uses macros that need to be activated.

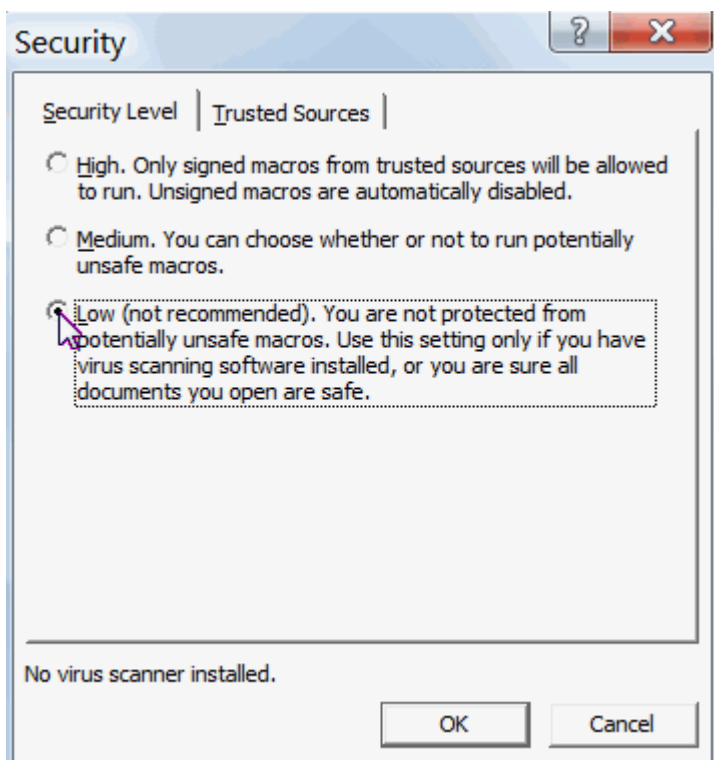
To do this, go to **Tools > Options** and do the following:

Click the **Security** tab

Then click the **Macro Security** button



The below window will appear:



And then do the following:

On the **Security Level** tab, click the **Low** option button

Note: *Medium security could also be chosen, but then every time you open the Betgem calculator a dialog window will appear asking users to enable or disable macros. Choosing Low will enable the macros automatically rather than manually.*

Common elements of the Betgem calculator.

On every sheet of the Betgem you will find the HOME icon:



It is a clickable link to the HOME sheet that contains links to all the other sheets. You can still access any sheet the conventional way-by clicking on its tab.

On every calculator sheet of the document you will find the CLEAR icon:



When clicked it will clear the contents of the interactive cells and thus the table will be ready for new input.

On every web query sheet of the document you will find the REFRESH icon:



When clicked it will refresh the data in the relevant cells of the table with the most recent internet content.

On every calculator sheet of the document you will find green cells:



Those are the cells that require user input, either via the keyboard or by clicking the scroll button if available:



All the scroll buttons in any of the Betgem calculator tables change the relevant cell's value by increments of 1 only, if you want to input a decimal value, just use the keyboard to enter the value you want and hit enter, you do not need to enter any other symbols i.e. **£** or **%**.

The HOME sheet:

This is your navigation/menu point-from here you can access any of the sheets via the relevant links.

CALC1 [TRADING/HEDGING CALCULATOR FOR THE BETTING EXCHANGES](#)
CALC2 [DUTCHING AND ARBITRAGE CALCULATOR](#)
CONV [ODDS CONVERSION TOOL](#)

LS D1 [LEVEL STAKES BETTING, DECIMAL ODDS, SINGLES](#)
LS F1 [LEVEL STAKES BETTING, FRACTIONAL ODDS, SINGLES](#)
LS D2 [LEVEL STAKES BETTING, DECIMAL ODDS, DOUBLES](#)
LS F2 [LEVEL STAKES BETTING, FRACTIONAL ODDS, DOUBLES](#)
LS L1 [LEVEL STAKES BETTING, LAYING, SINGLES](#)

FL D1 [FLAT BETTING, FIXED WIN, DECIMAL ODDS, SINGLES](#)
FL F1 [FLAT BETTING, FIXED WIN, FRACTIONAL ODDS, SINGLES](#)
FL D2 [FLAT BETTING, FIXED WIN, DECIMAL ODDS, DOUBLES](#)
FL F2 [FLAT BETTING, FIXED WIN, FRACTIONAL ODDS, DOUBLES](#)
FL L1 [FLAT BETTING, FIXED WIN, LAYING, SINGLES](#)

PR D1 [PROGRESSIVE BETTING, FIXED WIN, DECIMAL ODDS, SINGLES](#)
PR F1 [PROGRESSIVE BETTING, FIXED WIN, FRACTIONAL ODDS, SINGLES](#)
PR D2 [PROGRESSIVE BETTING, FIXED WIN, DECIMAL ODDS, DOUBLES](#)
PR F2 [PROGRESSIVE BETTING, FIXED WIN, FRACTIONAL ODDS, DOUBLES](#)
PR L1 [PROGRESSIVE BETTING, FIXED WIN, LAYING, SINGLES](#)

SC [SOCCER RESULTS](#)
HR [HORSE RACING RESULTS](#)
GR [GREYHOUND RESULTS](#)
TN [TENNIS RESULTS](#)
BK [BASKETBALL RESULTS](#)
BB [BASEBALL RESULTS](#)
IH [ICE HOCKEY RESULTS](#)
AF [AMERICAN FOOTBALL RESULTS](#)

ST S [HORSE RACING STEAMERS BY SIGNIFICANCE](#)
ST T [HORSE RACING STEAMERS BY TIME](#)
DR S [HORSE RACING DRIFTERS BY SIGNIFICANCE](#)
T M [HORSE RACING TOP MOVERS](#)
NAPS [DAILY HORSE RACING NAPS FROM THE RACING POST](#)
DP [HORSE RACING DAILY POINTERS](#)

COPYRIGHT: WWW.BETGEM.COM

HOME / CALC1 / CALC2 / CONV / LS D1 / LS F1 / LS D2 / LS F2 / LS L1 / FL D1 / FL F1 / FL D2 / FL F2 / FL L1 / PR D1 / PR F1 / PR D2 / PR F2 / PR L1 / SC / HR / GR / TN / BK / E

On the left side of every link you will find a grey coloured cell containing the sheets name. As you will notice the sheets are divided into 6 different sections, separated by an empty row, each section's sheets names and tabs are coloured in the same colour-dark grey with white font and light grey with black font.

For convenience, the link text is in blue and underlined, just like a web page, and once you visit any link, it becomes purple:

CALC1 [TRADING/HEDGING CALCULATOR FOR THE BETTING EXCHANGES](#)
CALC2 [DUTCHING AND ARBITRAGE CALCULATOR](#)
CONV [ODDS CONVERSION TOOL](#)

TRADING/HEDGING CALCULATOR FOR THE BETTING EXCHANGES, BACK FIRST section:

BACK FIRST											
COMMISSION		5.00%		BACK ODDS		3.00		STAKE		£100.00	
GROSS BACK WIN		£300.00		BACK LIABILITY		£100.00					
<input type="checkbox"/>	LAY ODDS +	1.99	1.98	1.97	1.96	1.95	1.94	1.93	1.92	1.91	1.90
<input type="checkbox"/>	LAY ODDS -										
	BACKER'S STAKE	£149.61	£150.38	£151.14	£151.92	£152.71	£153.50	£154.30	£155.11	£155.93	£156.75
	GROSS WIN-LAY	£297.73	£297.74	£297.75	£297.77	£297.78	£297.79	£297.80	£297.81	£297.82	£297.83
	ALL LIABILITY	£248.12	£247.37	£246.61	£245.84	£245.07	£244.29	£243.50	£242.70	£241.89	£241.08
	LAY LIABILITY	£148.12	£147.37	£146.61	£145.84	£145.07	£144.29	£143.50	£142.70	£141.89	£141.08
	NET PROFIT IF LAY WINS	£42.13	£42.86	£43.59	£44.33	£45.07	£45.82	£46.59	£47.35	£48.13	£48.92
	NET YIELD IF LAY WINS	16.98%	17.32%	17.67%	18.03%	18.39%	18.76%	19.13%	19.51%	19.90%	20.29%
	NET PROFIT IF BACK WINS	£41.88	£42.63	£43.39	£44.16	£44.93	£45.71	£46.50	£47.30	£48.11	£48.92
	NET YIELD IF BACK WINS	16.88%	17.23%	17.59%	17.96%	18.33%	18.71%	19.10%	19.49%	19.89%	20.29%
	DIFFERENCE(BACK-LAY)	-£0.25	-£0.22	-£0.20	-£0.17	-£0.14	-£0.11	-£0.08	-£0.06	-£0.03	£0.00

SKREW NET PROFIT TO: BACK WIN £ 0.01+ BACK WIN £ 0.1+ BACK WIN £ 1+
 LAY WIN £ 0.01 LAY WIN £ 0.1 LAY WIN £ 1

COPYRIGHT: WWW.BETGEM.COM

When you want to close your trade position, you find the current market odds by using the scroll button. It will move the odds in both directions with increments of 0.1 per click, 0.01 (tick) per column. The table will show then all the information you need for any particular odds.

You will use these scroll buttons every time you enter new odds in the table, so that the net profit is adjusted in the desired ratio. You have 3 different scroll buttons that use 3 different increments-0.01, 0.1 and 1. With just a few clicks of those buttons you can adjust the figures in any possible way. As the buttons actually control the backer's stake row of the table, the net profit rows (back and lay) will change by an increment that is not exactly 0.01, 0.1 or 1, that is the reason for the + sign next to the increment value by the scroll buttons. This does not impede the functionality of the table in any way. Commission is deducted from the net profit and that is why figures fluctuate depending on the back and lay odds value.

There are 8 check boxes on the right hand side of the table:

BACK FIRST											
COMMISSION		5.00%		BACK ODDS		3.00		STAKE		£100.00	
GROSS BACK WIN		£300.00		BACK LIABILITY		£100.00					
<input type="checkbox"/>	LAY ODDS +	1.99	1.98	1.97	1.96	1.95	1.94	1.93	1.92	1.91	1.90
<input type="checkbox"/>	LAY ODDS -										
	BACKER'S STAKE	£149.61	£150.38	£151.14	£151.92	£152.71	£153.50	£154.30	£155.11	£155.93	£156.75
	GROSS WIN-LAY	£297.73	£297.74	£297.75	£297.77	£297.78	£297.79	£297.80	£297.81	£297.82	£297.83
	ALL LIABILITY	£248.12	£247.37	£246.61	£245.84	£245.07	£244.29	£243.50	£242.70	£241.89	£241.08
	LAY LIABILITY	£148.12	£147.37	£146.61	£145.84	£145.07	£144.29	£143.50	£142.70	£141.89	£141.08
	NET PROFIT IF LAY WINS	£42.13	£42.86	£43.59	£44.33	£45.07	£45.82	£46.59	£47.35	£48.13	£48.92
	NET YIELD IF LAY WINS	16.98%	17.32%	17.67%	18.03%	18.39%	18.76%	19.13%	19.51%	19.90%	20.29%
	NET PROFIT IF BACK WINS	£41.88	£42.63	£43.39	£44.16	£44.93	£45.71	£46.50	£47.30	£48.11	£48.92
	NET YIELD IF BACK WINS	16.88%	17.23%	17.59%	17.96%	18.33%	18.71%	19.10%	19.49%	19.89%	20.29%
	DIFFERENCE(BACK-LAY)	-£0.25	-£0.22	-£0.20	-£0.17	-£0.14	-£0.11	-£0.08	-£0.06	-£0.03	£0.00

SKREW NET PROFIT TO: BACK WIN £ 0.01+ BACK WIN £ 0.1+ BACK WIN £ 1+
 LAY WIN £ 0.01 LAY WIN £ 0.1 LAY WIN £ 1

COPYRIGHT: WWW.BETGEM.COM

These check boxes control only the cell background colour or the font colour of any particular row of the table. The colour schemes are preset and the user can't change them, they can just be switched on and off with ticks in the row's check box. The box that is opposite the row named DIFFERENCE (BACK - LAY), provides a useful feature-when ticked, the background colour of the cells in that row will change (to light green) only when the value is between -0.02 and 0.02 (practically zero, meaning the trade profit is equalized for both outcomes rather than skewed towards one of them).

There is another check box in front of the lay odds scroll button. When ticked the table will change appearance as in the screenshot below:

BACK FIRST

BACK ODDS **3.00** STAKE **£100.00** GROSS BACK WIN **£300.00**
 BACK LIABILITY **£100.00**

ENTER LAY ODDS > **2.00**

LAY ODDS + LAY ODDS -

BACKER'S STAKE	£150.00
GROSS WIN-LAY	£300.00
ALL LIABILITY	£250.00
LAY LIABILITY	£150.00
NET PROFIT IF LAY WINS	£50.00
NET YIELD IF LAY WINS	20.00%
NET PROFIT IF BACK WINS	£50.00
NET YIELD IF BACK WINS	20.00%
DIFFERENCE(BACK-LAY)	£0.00

↑ ↓ ↑ ↓ ↑ ↓

COPYRIGHT: WWW.BETGEM.COM

When ticked, the box will override the function of the odds scroll button and the user has to manually enter the desired lay odds in the red cell. This is done mostly for the exchange poker game, where odds can change quickly by a big value which makes using the odds scroll button impractical and slow. When this feature is activated no commission will be deducted from the net profit (back or lay) and the profit will be automatically equalized (no option to skew profits). For sport betting trading normal mode is the better option.

The same sheet contains another table - LAY FIRST (when using Betgem, scroll down to access it). It works in exactly the same way as the one already described above, but for the opposite trade-lay first then close the trade by backing. As the layout and controls are exactly the same, please use the above instructions when using the LAY FIRST table.

DUTCHING AND ARBITRAGE CALCULATOR:

Here you have the HOME and the CLEAR icons again; they function in the same way as already described.

Again, the user needs to input data in the green cells only. Again, the scroll buttons change values by increments of 1 only, but in the liability cell you can enter any value with the keyboard (if decimal, i.e. 11.56) and hit enter (again, no need to enter the £ sign, just the number).

What makes this calculator unique is the fact that it is an arbitrage and dutching tool at the same time.

The example below shows use in a football arbitrage scenario:

	ODDS	STAKE
1	1.90	£55.81
2	4.00	£26.51
3	6.00	£17.67
4		
5		
6		
7		
8		
9		
10		

COPYRIGHT: WWW.BETGEM.COM

Adjust the number of outcomes, then choose liability (total amount you want to wager), the table will show you with green colour which cells to fill in with the odds. When the last green cell is filled, hit enter. If there is an arbitrage situation, the net win will be a positive number (green), and the book will be less than 100% (green).

If not, the same cells will show red coloured numbers:

OUTCOMES
 LIABILITY
 GROSS WIN
 NET WIN
 ACTUAL ODDS
 BOOK
 NET YIELD

	ODDS	STAKE
1	1.90	£51.28
2	3.00	£32.48
3	6.00	£16.24
4		
5		
6		
7		
8		
9		
10		

COPYRIGHT: WWW.BETGEM.COM

The example below shows use as dutching tool in horse racing with bets spread among 5 horses:

OUTCOMES
 LIABILITY
 GROSS WIN
 NET WIN
 ACTUAL ODDS
 BOOK
 NET YIELD

	ODDS	STAKE
1	7.00	£16.15
2	4.00	£28.26
3	6.00	£18.84
4	5.00	£22.61
5	8.00	£14.13
6		
7		
8		
9		
10		

COPYRIGHT: WWW.BETGEM.COM

As above, green cells should be filled in. The table will then tell the user the exact amount that should be wagered on any of the selections. Again, the table will use red coloured numbers to tell you if a dutching bet is impossible at the desired odds. **Tip:** when the odds are entered, you can see a scenario with dutching one selection less-just reduce the number of outcomes by 1 (by clicking on the scroll button).

ODDS CONVERSION TOOL:

SELECT STARTING ODDS FORMAT

FRACTIONAL DECIMAL AMERICAN

2 / 3

DECIMAL
1.67

AMERICAN
-150.00

COPYRIGHT: WWW.BETGEM.COM

Click one of the 3 option buttons to select starting odds format. Then simply use your keyboard to enter the starting odds in the green cells of the table. The converter then will calculate the odds and will show resulting odds in the other formats. To clear the table use the CLEAR icon at the top right corner.

Staking plan sheets of the BETGEM calculator.

The BETGEM calculator contains 15 staking sheets, divided into 3 categories-level stakes, flat and progressive betting. As the input principles are the same only one example with instructions will be given below.

	ODDS	STAKE	GROSS	NET WIN	OUTCOME
1	2.00	£100.00	£200.00	£100.00	LOST
2	3.00	£100.00	£300.00	£200.00	LOST
3	4.00	£100.00	£400.00	£300.00	WON
4	2.50	£100.00	£250.00	£150.00	LOST
5	6.00	£100.00	£600.00	£500.00	LOST
6	7.00	£100.00	£700.00	£600.00	LOST
7					
8					

STATISTICS		
TOTAL	5	
WON	1	20.00%
LOST	4	80.00%
AVG. ODDS	4.08	
NET PROFIT	-£100.00	

COPYRIGHT: WWW.BETGEM.COM

The table will tell you with green colour which cells need user input. When you enter the odds (see above) and press enter, the table will make relevant calculations and the outcome cell will become green, signalling it needs input.

Then simply select either WON or LOST from the drop down menu. For the level stakes and the flat betting tables you have 1000 rows that can be filled in.

Whatever the number of bets (from 1 to 1000), the calculator will automatically display the statistics so that you know exactly what is happening after every new bet. You can clear the table at any time by clicking the CLEAR icon at the top right corner.

Tip: *If you clear the table, you can't use Excel's UNDO function. So if you click the CLEAR icon by accident, close the file without saving it and reopen it. Excel auto saves any file every 10 minutes by default, you can change this setting by TOOLS>OPTIONS>SAVE*

For the progressive betting tables there is no statistics, as that type of betting uses different principles.

For every of the 3 types of betting covered-level stakes, flat, progressive, there are 5 different tables-singles, doubles, singles fractional odds, doubles fractional odds and laying.

No betting on more than 2 events is covered by the calculator, as it is well known that with the increase of the number of events in an accumulator bet the advantage of the bookmaker increases and the value for the punter decreases.

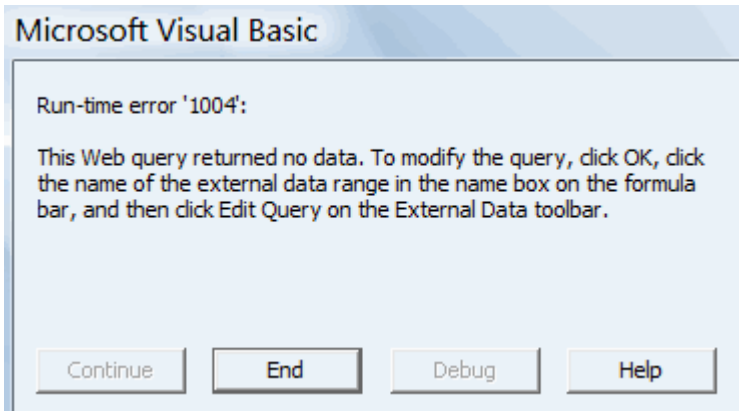
However, the calculator can still be used for accumulator bets, just multiply the odds of all the events and enter the resulting odds in the singles section of the calculator, then proceed as if it is a single event bet.

The Refreshable Web Query sheets of the BETGEM calculator.

The 2 sections with refreshable tables are the RESULTS section and the HORSE RACING section. In these tables the user does not have the option to enter any data, as the data is retrieved from the internet using external third party web sites. Please note that you have to have an active internet connection if you are to use this part of the calculator.

First of all, the web queries do not work 100% of the time. As they use web sites to retrieve the relevant data, they are entirely dependant on the web sites' being up and running and user's internet connection being active. Sometimes sites do experience problems and the same applies to home internet user's connection to the internet. This being said, the convenience of using these tables far outweighs the occasional technical issue.

Sometimes the following window will appear:



If you refresh a table and the window on the left appears, do not be alarmed. This means that Excel has found the site but there is no current data to be imported. This simply means that if you want to import sport results for example, and there are no current results for that particular event, every time you will be displayed this window. Just click the **End** button.

Users will be shown the above window every time they try to retrieve data that is not currently available, which could happen quite often with the results tables- obviously sport events follow certain "seasons" or "schedules" and fresh data is not always available.

Please find below screenshots of some of the results tables.

SOCCKER RESULTS:



HORSE RACING

GRAYHOUNDS

TENNIS

BASKETBALL

BASEBALL

ICE HOCKEY

AM. FOOTBALL

COPYRIGHT:
WWW.BETGEM.COM

SOCCKER



Monday 17th September

England: Premier League

20:00:00

Derby **0:0** Newcastle

Germany: 2. Bundesliga

19:15:00

Aue **0:0** Bor. Monchengladbach

Portugal: SuperLiga

19:45:00

Guimaraes **0:0** Nacional

Sweden: Allsvenskan

18:00:00

Djurgarden **0:0** Trelleborg

18:00:00

Malmö FF **0:0** Örebro

Norway: Tippeligaen

18:00:00

Aalesund **0:0** Strømsgodset

Sweden: Superettan

18:00:00

Degerfors **0:0** Sylvia

18:00:00

GIF Sundsvall **0:0** Bunkeflo IF

18:00:00

Jonköping S. **0:0** Hacken

18:00:00

Norrköping **0:0** Landskrona

18:00:00

Sirius **0:0** Falkenbergs FF

18:00:00

Åtvidaberg **0:0** Mjällby

Simply click the REFRESH icon and the latest results will appear in the table. Games that are in play will be highlighted, showing which minute of the game is being played. Below the HOME icon there are clickable grey font links to the other result tables, providing quicker access.

HORSE RACING RESULTS:



HORSE RACING



SOCCER

GRAYHOUNDS

TENNIS

BASKETBALL

BASEBALL	1st	Double Banded (IRE)	5/2
ICE HOCKEY	2nd	Let It Be (GB)	11/2
AM. FOOTBALL	3rd	Zefoooha (FR)	18/1

NAPS

DRIFTERS

STEAMERS BY TIME	1st	Castara Bay (GB)	9/1
RESULTS	2nd	Tufton (GB)	15/8
TOP MOVERS	3rd	Rosie's Glory (USA)	5/1

STEAMERS BY
SIGNIFICANCE

COPYRIGHT: WWW.BETGEM.COM	15:20 Musselburgh		
	1st	Toparudi (GB)	13/2
	2nd	Sharp Reply (USA)	7/1
	3rd	Tonnante (GB)	11/8

	15:15 Listowel		
1st	Pyrenees (IRE)	12/1	

All the day's race results will be shown here, the latest race result appears on the very top of the table. First 3 horses are shown as well as the odds of each one at the time of the race.

In this table you will find clickable links not only to the other result sheets, but to the horse racing tables containing racing specific information.

GREYHOUND RESULTS:



- SOCCER
- HORSE RACING
- TENNIS
- BASKETBALL
- BASEBALL
- ICE HOCKEY
- AM. FOOTBALL

COPYRIGHT:
WWW.BETGEM.COM

GREYHOUND RACING



Monday																
Crayford	19.3	19.46	20.02	20.18	20.34	20.5	21.06	21.23	21.4	21.57	22.14	22.3				
Walthamstow BAGS	14.18	14.37	14.57	15.17	15.38	15.58	16.18	16.37	16.57	17.17	17.33	17.48	18.04	18.18		
Swindon BAGS	11.03	11.19	11.34	11.48	12.04	12.18	12.32	12.47	13.04	13.19	13.33	13.51				
Sheffield BAGS	11.11	11.28	11.42	11.57	12.12	12.27	12.42	12.58	13.12	13.27	13.44	14.03				
Monmore BAGS	14.08	14.27	14.47	15.07	15.28	15.48	16.08	16.27	16.48	17.07	17.27	17.44	17.58	18.11		
Nottingham BAGS	18.28	18.44	19.01	19.16	19.32	19.48	20.04	20.19	20.36	20.52	21.07	21.22	21.37	21.52	22.07	22.22
Romford BAGS	18.39	18.56	19.11	19.27	19.43	19.58	20.14	20.31	20.47	21.02	21.17	21.31	21.45	22		
Yarmouth BAGS	18.33	18.49	19.06	19.22	19.37	19.53	20.09	20.24	20.41	20.57	21.12	21.28	21.44	22		
Sunday																
Oxford BAGS																

This is the only table that does not display results directly, but displays links to results of every single greyhound race for the last 2 days. Links are live and clickable, once clicked the default browser will be launched and the relevant web site containing the result in question will be loaded.

As the remaining results sheets look similar, no screenshots will be provided. There are tables for tennis, basketball, baseball, ice hockey and american football results.

The HORSE RACING section of the BETGEM calculator contains 6 sheets - steamers by significance, steamers by time, drifters by significance, top movers, daily naps from the racing post (from national newspapers tipsters) and daily pointers. Please find below a couple of example screenshots.

DAILY HORSE RACING NAPS FROM THE RACING POST:



<u>Horse name</u>	<u>Time</u>	<u>Place</u>	<u>Newspaper</u>	<u>Tipster</u>	<u>Won</u>	<u>Lost</u>	<u>Profit £1</u>
Maramba (USA)	14:10	Rdcr	News Of The World	Pegasus	0	2	57.57
Howdigo	15:00	Leic	The Times	Rob Wright	1	0	32
Parchment (IRE)	15:40	Rdcr	Newcastle Journal	Doug Moscrop	0	2	26
Tonnante	15:20	Muss	Western Daily Press	Bob Watts	1	0	20.94
Rainbow Fox	16:00	Leic	The Star	Tony Lewis	1	0	18.64
Fabrian	15:30	Leic	Daily Mail	Robin Goodfellow	0	2	15.29
Solo River	14:30	Leic	Shropshire Star	Bob Downing	1	0	10.63
Pearl Trader (IRE)	15:10	Rdcr	The Colossus	Karl Hedley	1	0	10.22
Prunes	14:50	Muss	Irish Post	David Thorpe	0	4	5
Prunes	14:50	Muss	Sheffield Star	Fortunatus	0	2	-0.17
Flying Goose (IRE)	16:00	Leic	Racing Post	Newmarket	0	3	-0.5
Tudor Court (IRE)	14:10	Rdcr	London Evening Standard	Not Applicable	0	2	-0.86
Kirkby's Treasure	14:20	Muss	Daily Post	Mercury	0	4	-3.77
Nawamees (IRE)	15:30	Leic	Weekender	Mel Cullinan	1	0	-5.88
Piccolo Pete	14:40	Rdcr	Coventry Evening Telegraph	Paul Allen	0	4	-5.88
Tikinheart (IRE)	14:40	Rdcr	The Guardian	Not Applicable	0	2	-6.97
Let It Be	15:40	Rdcr	Daily Telegraph	Marlborough	1	0	-7.37
Bespoke Boy	16:20	Muss	Blackpool Gazette	Steve Simpson	0	4	-8.12
Casual Affair	15:40	Rdcr	Irish Independent	John Martin	1	0	-8.46
Tonnante	15:20	Muss	Yorkshire Post	The Duke	0	1	-11.03

The information here is the same as in the racing post, only here you just need a click of the mouse and you get all the tipsters' selections, starting from the tipster with the most profit per £1 level stakes bet (at the top of the table), down to the others.

Again, there are clickable grey font links to other tables with horse racing information, including the results table. This makes navigation easier. The same links will appear in the other horse racing tables.

HORSE RACING STEAMERS BY SIGNIFICANCE:



HORSE RACING STEAMERS BY SIGNIFICANCE



NAPS DRIFTERS STEAMERS BY TIME
POINTERS TOP MOVERS RESULTS

COPYRIGHT: WWW.BETGEM.COM

Name	Event	Best Odds	No. of Bookies	Average Market Share Swing	Significance
Authorized	Prix De L Arc De Triomphe	13/8	12	9.47%	7318.31
Thanxforthat	Musselburgh 14:50 7f 30yrds Class 5 Turftv Selling Stakes (2-0yo)	9/2	14	8.59%	5088.78
Soldier of Fortune	Prix De L Arc De Triomphe	7/2	11	8.94%	4557.54
Flying Goose	Leicester 16:00 5f 218yrds Class 4 Weatherbys Printing Handicap (3-0yo)	7/4	14	5.21%	3622.30
Magnet For Money	Listowel 16:15 2m Of Devon Inn Hotel 3-Y-O H'dle	7/4	7	6.92%	2289.73
Prunes	Musselburgh 14:50 7f 30yrds Class 5 Turftv Selling Stakes (2-0yo)	11/8	7	5.13%	2166.03
Sienna Storm	Musselburgh 15:50 1m 1f Class 6 Goose Green Claiming Stakes (3yo plus)	5/2	11	3.44%	1409.40
Zamalik	Redcar 17:10 6f Class 5 Go Racing At Thirsk Tomorrow Apprentice Handicap (3yo plus)	13/8	9	3.27%	1359.76
Tudor Court	Redcar 14:10 6f Class 5 E B F Maiden Fillies' Stakes (2-0yo)	2/1	9	3.65%	1134.74
Falcon s Fire	Musselburgh 17:20 1m 4f Class 6 Scottish Racing Handicap (3yo plus)	10/3	9	3.70%	1091.56
Blackberry Pie	Leicester 17:00 1m 0f 60yrds Class 5 Ladbrokes Com Handicap (3-0yo)	5/1	12	3.50%	1050.78
Russian Reel	Musselburgh 16:20 5f Class 3 Betfair Nursery Handicap (2-0yo)	11/4	12	2.62%	1025.60
Fabrian	Leicester 15:30 1m 1f 218yrds Class 5 Ladbrokescasino Com Claiming Stakes (3yo Plus)	9/4	4	5.15%	980.79
Dylan Thomas	Prix De L Arc De Triomphe	5/1	11	3.63%	957.96
Tufton	Leicester 15:30 1m 1f 218yrds Class 5 Ladbrokescasino Com Claiming Stakes (3yo Plus)	5/2	2	8.73%	902.12
Always Brave	Leicester 14:30 5f 218yrds Class 5 Ladbrokes Com Ibstock Maiden Auction Stakes (2-0yo)	11/4	8	3.01%	835.69
Lanterns of Gold	Redcar 15:10 1m 1f Class 5 E B F - Double Trigger Maiden Stakes (2-0yo)	2/1	4	4.34%	788.99
Flashy Beau	Listowel 16:45 2m 0f Labrokes Ireland Handicap Hurdle (74-109) (div 2) (5yo plus)	3/1	6	4.56%	655.94

On the top of the table will be the horses whose odds have moved the most (best steamers), as well as the time and the venue of the race, best odds, number of bookmakers that reduced their odds, the percentage of the move and the significance of the move (represented by a number). Again, you can navigate from this sheet to any other sheet that is related to horse racing (via the grey coloured links) or to the HOME sheet (via the HOME icon at the top left).

And finally...

For any troubleshooting and technical issue users are welcome to contact the author at all times (see contact details below).

The BETGEM CALCULATOR will be updated and improved. Unbiased and honest suggestions, comments, recommendations will be welcome by the author.

Anyone that uses the calculator could win a free gift-a betting e-book, delivered electronically. To qualify for the gift just send an email to info@betgem.com, answering the following questions:

1. What could be added to the calculator?
2. What could be changed?
3. What could be removed?
4. Rate the visual interface on a scale of 1 to 10.
5. Rate the calculator's manual on a scale of 1 to 10.
6. Share any ideas/suggestions about how functionality/content can be improved.

Thank you for using my product and good luck !!!